



A Weekly Update
For The Employees of
North Central Health Care



NEWS YOU CAN USE



WEEKLY CONNECTION WITH GARY OLSEN

An Update on Pine Crest Nursing Home

I have received questions from employees requesting an update on the status of Pine Crest Nursing Home. To recap, in the spring of 2022 the Lincoln County Board authorized an Ad Hoc Committee to review Pine Crest. The Committee submitted a report to the Lincoln County Board earlier this year detailing findings about the operations and maintenance of Pine Crest. There were many different options

presented in the report, but the Ad Hoc Committee did not make any recommendations on these options.

When the Ad Hoc Committee's report was discussed at the County Board level, the Board narrowed their path forward to 3 options:

1. Hold a referendum to increase the tax levy for Lincoln County with NCHC continuing to manage Pine Crest.
2. Sell the nursing home.
3. Close the nursing home.

During subsequent County Board meetings, it was made very clear that the intent of the County Board was to be sure Pine Crest remained a skilled nursing facility and the option of closing the facility was quickly taken off the table. The County Board then authorized their Administrative and Legislative (A&L) Committee to hire a broker to work on finding potential buyers for the facility. The A&L Committee did hire a broker who is actively working to find a potential buyer.

continued on page 2 ►

- Outbreak Alert 3
- Welcome New Hires! 4
- Pharmacy Updates 5
- Upcoming Events 6
- HR Insights 7
- Foodie Forecasts 8-9



Occurrence Reporting Hotline

x4488 or 715.848.4488

Only significant or sentinel events requiring immediate notification to this hotline.

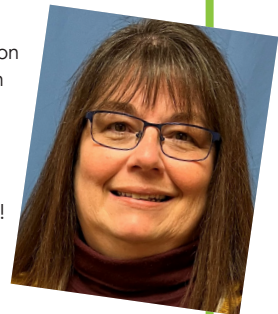
Person-Centered
**Shout
out**



Lisa Murkowski, IMS

Thank you for your CONSTANT consideration & support of our team in TIER/Cerner in setting up staff accounts and advocating for EHR. You are invaluable and we sincerely appreciate you!

From:
Valerie Paquette





◀ continued from page 1

During the August Lincoln County Board meeting, a County Board member brought forward a resolution that would require a binding referendum to increase the tax levy and allow Pine Crest to continue operating as a county-owned nursing home. Three amendments were made to the resolution, which all failed, and then resulted in the resolution not passing with 9 yes and 13 no votes. Again, it was very clear from the discussions by the various County Board members that they do not want the nursing home to be closed, but feel it is best to continue with locating a buyer to purchase the facility.

During this August meeting, many public comments were made in support of the resolution to keep Pine Crest county-owned. What I was most impressed with was that it was clear the comments were directed towards the wonderful and dedicated staff who work at Pine Crest. It was easy to recognize as I listened – our staff clearly embodies Person-Centered Service and our Core Values. For that, I thank you for maintaining your focus on our residents and those we serve.

I have been asked why NCHC is not fighting to keep Pine Crest from being sold. I will continue to remind people that NCHC serves as an

“arm” of our three partner counties and our organization will continue to act in a productive manner that serves the desires of our partner counties. NCHC exists because of the three counties’ partnership. The decision regarding the future of Pine Crest rests on the shoulders of the Lincoln County Board. My job as Executive Director is first and foremost to serve in the best interests of those we serve and protect our clients. Secondly, I am here to serve our employees. The amazing employees at Pine Crest have helped me through this process and I am doing my best to protect the interests of the employees as we move forward with a potential sale of Pine Crest.

Again, I want to thank the employees at Pine Crest who continue to provide excellent Person-Centered Service. I know this has been a difficult process and I am committed to continued communication with our staff. I will continue holding employee meetings to provide updates as we progress with the future of Pine Crest.

Gary Olsen



PHOTO OF THE WEEK



Our August NCHC Orientation Group learns all about Core Values, Person Centered Service, Safety, Compliance and more on day one of their immersive orientation sessions!

IT'S NEW HIRE ORIENTATION WEEK
A Warm Welcome to Our Newest Employees

Get ready to roll out the welcome mat for our newest group of NCHC Employees! This month, we're excited to introduce 12 fresh faces to our team. Let's demonstrate our trademark NCHC Core Values by offering a helping hand as they dive into our awesome culture. Whether it's giving them the quick tour of your department or sharing your insider tips, your support will make all the difference!



MVCC: ALL AREAS

Masks **REQUIRED** at
ALL TIMES: **OUTBREAK.**

OUTBREAK ALERT: WAUSAU CAMPUS Mount View Care Center Building – 8/25/23

Due to outbreak of illness in the facility, staff, visitors and patients are **REQUIRED** to wear masks at all times in all areas including hallways, waiting rooms and meetings that include residents or patients. This includes the MVCC lobby, Bistro and all hallways in nursing home, floors 1-4. Staff may remove masks while working alone in private offices, employee-only access areas and in areas prohibited to patients or residents, like staff-only meeting rooms, offices or lounges. Signs have been placed to notify all visitors and staff when masks are required and additional boxes of masks have been placed at entry points throughout the facility.

All other locations: Face masks are RECOMMENDED, but not required by staff, patients and visitors.

NCHC EMPLOYEE REPORTING

- Employees are **REQUIRED** to report any signs of illness to their manager immediately.
- Employees should **STAY HOME** if they are experiencing any signs of illness. Employee Health will provide return to work guidance.
- Staff are required to use PLT or take unpaid leave due to symptoms or exposure.
- Managers are **REQUIRED** to report employees with symptoms, exposure or positive for Covid-19 in SafetyZone ASAP.
- Employee Health: 715.848.4396

POSITIVE COVID-19 PATIENTS/RESIDENTS

- Patient/resident care areas will be designated with signage if a resident or patient is under Covid-19 Confirmed/Suspected Precautions.
- Units/Patients on Covid-19 Confirmed/Suspected Precautions must have it clearly posted on the entrance to the unit or patient room.

COVID-19 CONFIRMED/SUSPECTED PRECAUTIONS

- Employees will **REQUIRE** N95 Mask, Eye Protection (Face shield, goggles or safety glasses), Gloves and Gown during patient encounters.
- Visitors are allowed with Covid-19 positive patients. Face coverings and eye protection will be required during visits.

MEETING RESTRICTIONS

There are no in-person meetings restrictions for employee-only or client meetings at this time.

PLEASE CONTACT YOUR MANAGER FOR SPECIFIC OPERATIONAL QUESTIONS FOR YOUR AREAS.

employees on the move

Congratulations to these employees for their recent transfer or promotion!

Morgan Sefton transferred from Hospitality Assistant to CNA at Pinecrest under the supervision of Bette Lloyd effective 8/6/2023.



congrats!



Marathon County
Employees Credit Union



Proudly Serving NCHC Employees and Their Family Members Since 1965.

**Already a member: Thank you
Not a member: Contact us today!**

715 261-7680
400 East Thomas Street Wausau, WI 54403

Think MCECU First for All Your Financial Needs!



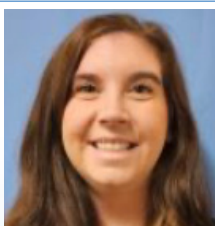
WELCOME THESE *New Employees* TO THE TEAM!

These employees were welcomed at Orientation August 28, 2023!

MVCC Wausau



Grace Czerwonka
CNA



Kelsey Lang
Respiratory
Therapist

Pine Crest



Claire Duley
Hospitality Assistant

Laundry



Theo Simson
Laundry Worker

Safety & Security



Tou Vang
Safety & Security
Officer

Health Information



Payton Stefan
Coding Specialist

Residential



Sheri Vargas
Personal Care
Worker



Marge Wolf
Personal Care
Worker

Protective Services



Rachel Budnick
Protective Services
Representative

Patient Access



Crystal Sabatke
Registration Specialist

Patient Financial Services



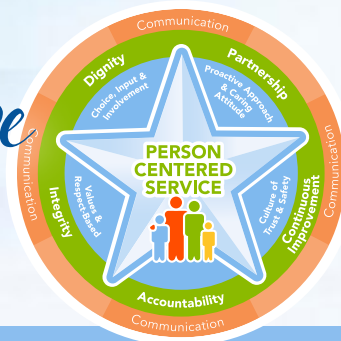
Sam Meuret
Patient Account Rep

Lakeside Recovery



Rebecca Sponder
Behavioral Health Pro

*We are so excited to have
you on our team!*





PHARMACY CLOSURE & ADDITIONAL UPDATES Prepare for closure as the pharmacy completes their move

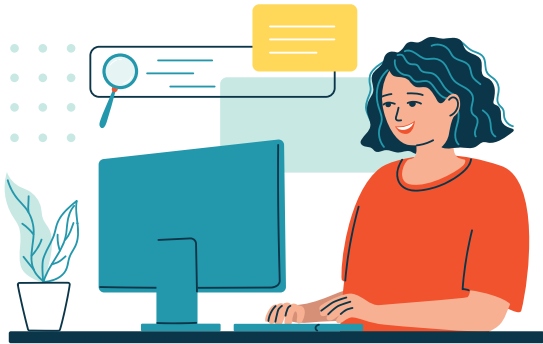
The Pharmacy will be completely closed on Tuesday, 8/29/23 to complete the remainder of the move. Employee prescriptions will not be filled on Tuesday, please reorder in advance. Pine Crest employee prescriptions will be sent as usual with the Wednesday delivery.

ACCESSING THE PHARMACY BEGINNING 8/30/23

Starting Wednesday, 8/30/23, visitors and employees may use the Suite B main entrance (Door #5) and proceed down the hall to Pharmacy. There is also an after-hours entrance for nursing staff.

Contact the Pharmacy via Email. When emailing the Pharmacy for any reason, please use the following email address: PharmacyDept@co.marathon.wi.us.

(Please note the two emails for Pharmacy in our system and use PharmacyDept@ selection only. The other email is a fax-to-email address for Pine Crest use)



NCHC STAFF COMPUTERS

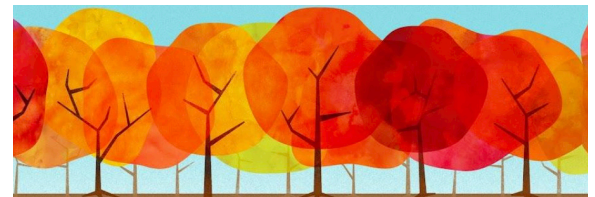
Need a desktop? We've got you covered.

A variety of staff computers are available on the NCHC Wausau Campus for work related tasks including checking or sending emails, completing UKG modules and more. To access these computers, visit the Human Resources Department in Suite A.

WAUSAU CAMPUS PARKING LOT REQUIREMENTS - PLEASE READ!

Please Do Not Change Parking Lots

Over the next several weeks, several departments on the Wausau Campus will be relocating. This means that staff may use different doors to access a closer route to their new location. This can affect parking. With our rear lot currently under construction, we ask that all staff continue to park in the parking spaces they currently park in, even after your department relocates. This may mean a slightly longer walk for some, but for others, it may not. What it will ensure is that those visiting our Campus for services will still have parking available. Please do not change where you park and continue to park in the same areas you have been. Once the rear parking lot is complete in the next month or so, we will have ample close parking for staff to park in the rear lot with additional designated parking for the various departments.



NCHC STAFF FALL VACCINATION SURVEY

Help Us Order the Appropriate Amount of Vaccine By Taking This 1-Minute Survey

Please take a minute of your day to complete this anonymous, short, one-question survey regarding our upcoming fall vaccinations beginning in October. The survey should take less than one minute to complete. This survey is anonymous. No personal information is being collected— just responses for those wanting vaccinations, and those that do not want vaccinations. COVID vaccines are no longer provided free to our organization and are very expensive per dose. This survey will help NCHC accurately order the correct number of vaccine doses so there is no waste of money or vaccine doses.

Survey is available at:

<https://forms.gle/oVmbvUa56gNkMynL8>

Please complete the survey by August 31 or sooner. Your participation is appreciated and helps our Infection Prevention Team with planning this fall.



We want MORE Awesome People like YOU on Our NCHC Team!

Be sure to SHARE our Career Posts on Social!



Improve Your Balance

Prevent Falls Resource Fair

September 20, 2023

from 1:00 - 4:00 p.m.

at Northcentral Technical College,

1000 W. Campus Dr., Wausau

Center for Health Sciences Building, First Floor

Use Parking Lot B



Event is FREE! No advance registration required.

Learn about:

- How to reduce your risk of falls
- Strength & balance exercises
- Tips to make your home safer
- Assistive devices
- Medications & fall risk
- Resources to help you stay independent
- AND MUCH MORE!

More information at: www.adrc-cw.org/falls
Questions? Call 1-888-486-9545

Sponsored by:



Walk for Suicide & Mental Health Awareness

prevent suicide
MARATHON COUNTY
PARTNERS SAYING LIVES IN WISCONSIN

Saturday, September 16, 2023
Marathon Park, Wausau

Sign-In: 9:00 am

Walk Begins: 10:00 am

All funds raised at this event will be used for the needs of the people of Marathon County and the surrounding area!



Information/Registration:
preventsuicidemarathoncounty.org
Register by September 1 to receive t-shirt

August 2023 Organizational Learning Modules



Each month staff are assigned 30-60 minutes of organizational training that needs to be completed by the due date.

Log into the learning management system (LMS), *UKG Pro Learning*, to complete the following training modules:

- **Understanding Diversity, Equity and Inclusion** (15 minutes)
- **Complete any outstanding assignments**





Here's how it works...

Step 1: Have Your Recruit Tell Us About You

Complete the "Referred by" section in their employment application including your name. No other forms or email are necessary.

Step 2: Meet Required Criteria

You and your recruit must be in good standing throughout this period and have no written warnings for attendance or other performance.

Step 3: Get Paid!

When your recruit joins the NCHC Team, and you both have met the referral requirements YOU will earn the following:

\$1,000 After 90 days (Employees 0.5 FTE status or above)

\$500 After 90 days (Employees below 0.5 FTE status)

Refer A Friend For Your Opportunity To Earn Referral Cash!

We value your referrals and know that together we can strengthen our North Central Health Care team. That's why earning some extra cash for your employee referrals has never been simpler. So text that friend, and get the ball rolling.

*For additional details and qualification requirements please refer to the Referral Bonus Policy.



Check out all the latest Job Opportunities www.norcen.org/Careers



DID YOU MISS THE 2ND QUARTER EMPLOYEE UPDATES?

Don't Worry - There's a Recorded Version!

If you missed the second quarter Update Sessions, you can still catch up on what's new at North Central Health Care and what exciting goals we have on the horizon. Simply check out the 2nd Quarter recorded session and stay informed!

<https://www.youtube.com/watch?v=LecAc9YHwi0>



HRinsights

Position Postings

Title: **Solutions Analyst**

Status: Full Time

Location: Wausau

Analyzes and consult on workflows, provide feedback to colleagues, vendors and partners. Leverage reporting tools to deliver data, in a meaningful way, to meet organizational and regulatory needs. Create training resources and support end users/leaders in the field. Complete moderately complex tasks with limited impact of errors. Pay - \$56,250.00 - \$62,500.00



Apply Online: <https://bit.ly/45tXxDs>

Title: **Registration Specialist**

Status: Full Time

Location: Merrill

Professionally greet, register, and assist clients. Schedule appointments for mental health and substance abuse services. Answering phone calls, provide accurate information to customers and transfer calls to appropriate individuals or departments in a professional manner. Pay - \$16.25-\$18.00/Hour



Apply Online: <https://bit.ly/3YVWmZ>

Title: **Community Treatment Technician**

Status: Full Time

Location: Wausau

Provides support and psychosocial rehabilitation services to consumers, youth or adults, enrolled in a Community Treatment. Services are provided in the home or community and may include side by side support with independent living skills, budgeting, social skills, groups facilitation and medication management. Pay - \$16.25-\$18.00/Hour



Apply Online: <https://bit.ly/CommTech23>

Looking for the Right Fit?
Check out the Realistic Job Preview Video at
www.norcen.org/RJP



WHAT'S FOR LUNCH?

WAUSAU CAMPUS EMPLOYEE CAFETERIA
OPEN TO ALL NCHC & WAUSAU CAMPUS



BREAKFAST HOURS 8:30 AM – 11 AM	LUNCH HOURS MONDAY – FRIDAY 11:30 AM – 1:30 PM HOT FOOD BAR \$.45/OUNCE (Weekdays Only)	GRAB-N-GO HOURS MONDAY – FRIDAY 8:30 AM – 5:30 PM WEEKENDS: GRAB-N-GO ONLY
---	---	--

THE SANDWICH & SALAD BAR IS BACK!
Make your own cold sandwich with lunch meat & fixins' OR self-serve at the salad bar. Salads are charged by weight.

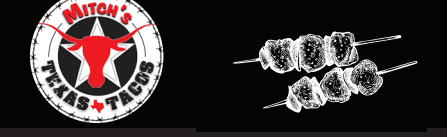
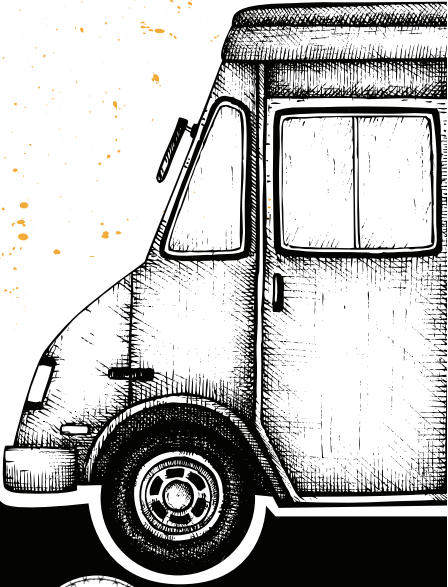
AUGUST 28 – SEPT 1, 2023

	MONDAY	TUESDAY	WEDS	THURSDAY	FRIDAY
MAIN	Beef Stroganoff Noodles Broccoli	BBQ Ribs Mac & Cheese Glazed Carrots	Roasted Chicken Cheesy Potatoes Beets	Spaghetti Garlic Toast Green Beans	Herbed Fish Baked Potato Veggie Blend
SOUP	TBD	Cream of Potato	Cream of Broccoli	TBD	TBD
DESSERT	Marble Cake	Pie	Cookies	Cookies	Strawberry Cheesecake Fluff

SEPTEMBER 4 – 8, 2023

	MONDAY	TUESDAY	WEDS	THURSDAY	FRIDAY
MAIN	Mac & Cheese Broccoli	BBQ Beef Diced Potatoes Green Beans	Ham Steak Sweet Potato Cauliflower	Salisbury Steak Mashed Potato Rutabaga	Baked Cod Baked Potato Mixed Veggies
SOUP	Turkey Dumpling Soup	TBD	Cheesy Potato Soup	TBD	Veggie Soup
DESSERT	Brownie	Cookies	Glazed Lemon Cake	Cookies	Strawberry Poke Cake

WAUSAU CAMPUS SUMMER FOOD TRUCKS



Mitch's Texas Tacos
Weekly on Thursdays*
Through August 31 at Mount View

10:30 am to 1:30 pm
Mount View Care Center
Entrance

HanumanExpress
Monthly on Fridays*
Aug 18 at Mount View

10:30 am to 2:30 pm
Employee Entrance

BB Kitchen
Monday, Sept. 18
Authentic Thai at Pine Crest

* Dates are subject to change. Watch for notices via email and NYCU.



THE BISTRO

MONDAY - FRIDAY | 7:30AM - 3PM
HOT FOOD AVAILABLE UNTIL 2:30PM

PANINI OF THE WEEK



TUNA MELT PANINI

TUNA SALAD | CHEDDAR | TOMATO

LATTE OF THE WEEK



Honey Cinnamon

\$1 OFF LARGE LATTES EVERY MONDAY!

Ice Cream

- ICE CREAM CONE1.00
- ROOT BEER FLOAT2.00



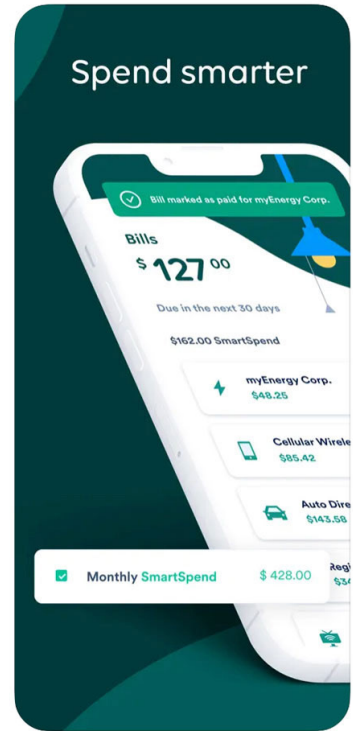
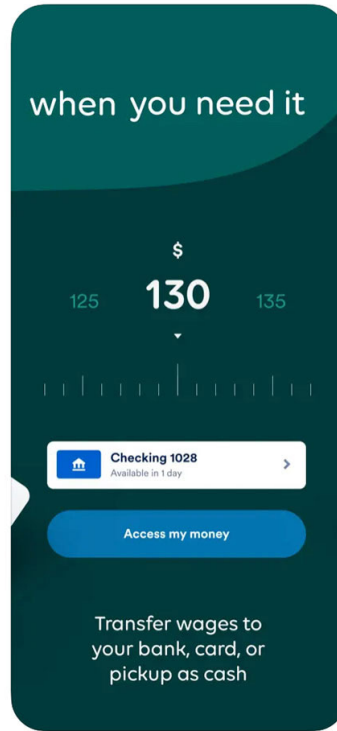
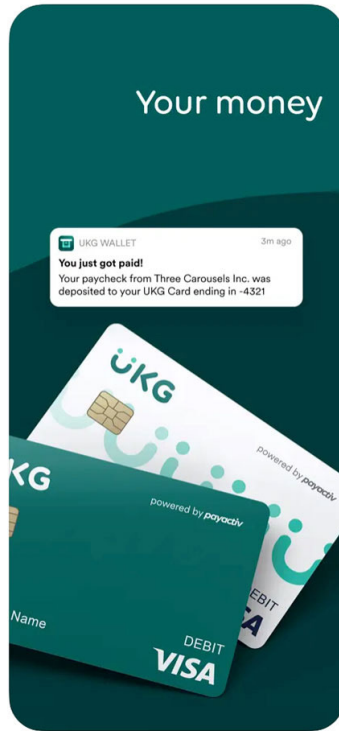
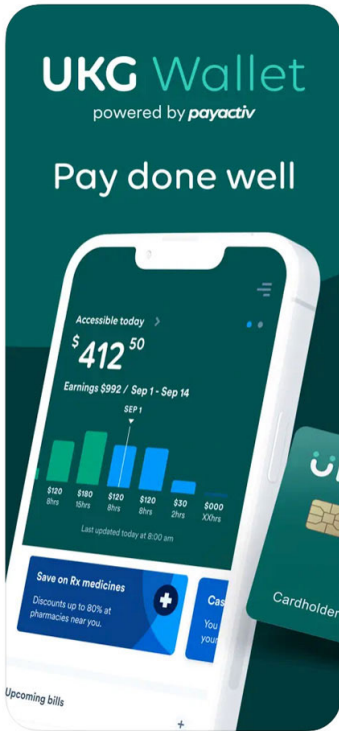
LUNCH

- PANINI COMBO (1/2 PANINI, CHIPS, WATER)5.00
- TURKEY BACON GUAC PANINI6.00
- TURKEY BACON GUAC WRAP5.75
- 3 CHEESE PANINI (ADD CHICKEN FOR \$1)3.50
- GRILLED HAM & CHEESE PANINI 4.50
- GARLIC BACON PANINI 5.00
- CHICKEN BACON RANCH WRAP5.25
- CHEESE QUESADILLA (ADD CHICKEN FOR \$1)4.50
- CALZONE 4.50/5.00
- CHEF SALAD/CHICKEN SALAD5.50

**Please note: All sales subject to Sales Tax.*



AVAILABLE for ALL NCHC EMPLOYEES!



Your payday, reimagined



UKG has partnered with your employer to reinvent the way you get paid. Work your shift, and we'll make a portion of that money available, giving you more control over when and how you want to use it.

The funds you access simply get deducted from your next paycheck. It's not a loan, so there's no interest—just your money, in your hands.



You worked the hours—let's get you paid.
Learn more at ukg.com.

Visit
www.norcen.org/UKGWallet
for More Details & Instructions!

Pro Tip

Access your wages for free with direct deposit to a UKG Visa® Card*

* The UKG Visa Prepaid Card is issued by Central Bank of Kansas City, Member FDIC, pursuant to a license from Visa U.S.A. Inc. Certain fees, terms, and conditions are associated with the approval, maintenance, and use of the Card. You should consult your Cardholder Agreement and the Fee Schedule at payactiv.com/card411. If you have questions regarding the Card or such fees, terms, and conditions, you can contact us toll free at 1 (877) 747-5862, 24 hours a day, 7 days a week.